

# ACMA Series

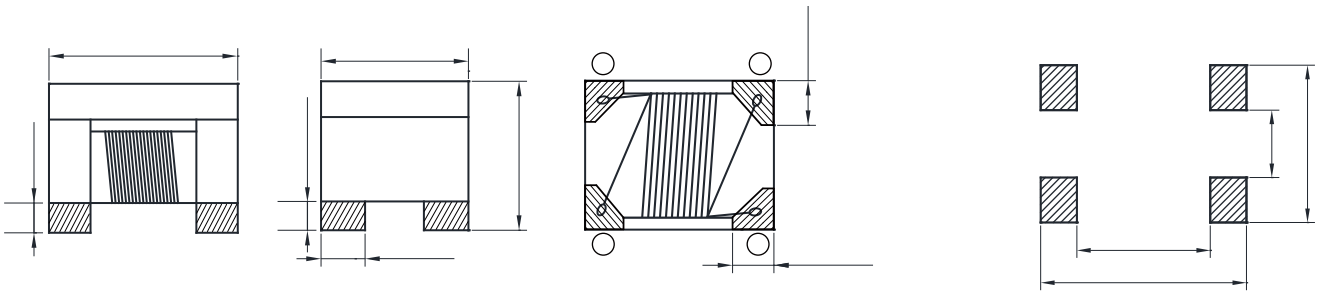


## FEATURES

- 
- 
- 
- 
- 

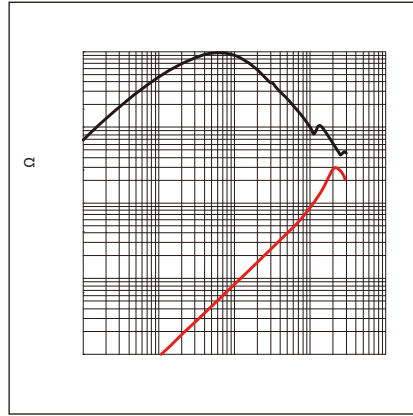
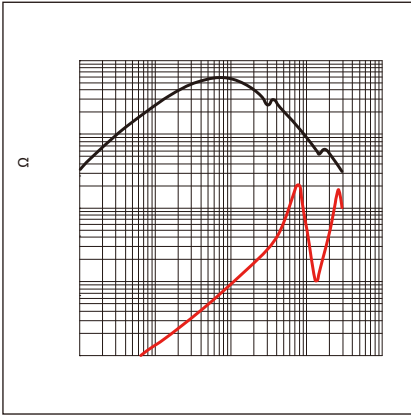
## APPLICATION

- exRa s stem



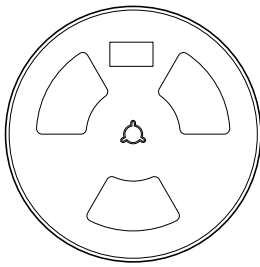
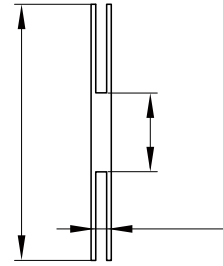
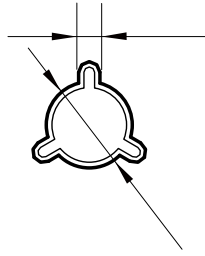
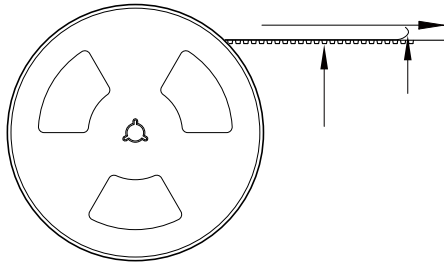
Part No	Z@10MHz Min	Z@10MHz Typ	L @ 100kHz/0.1V	Tol.	I <sub>R</sub> Max.	R <sub>DC</sub> Max.	V <sub>DC</sub> Max. (V)	IR Min
	2200	2600			200		80	
							80	

I<sub>R</sub>

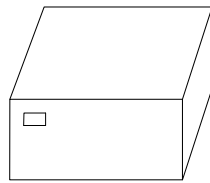




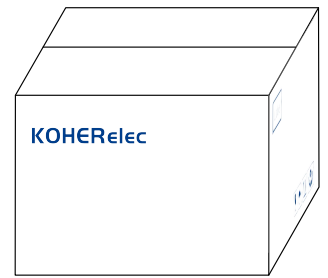
:



1000 Pcs/Reel



5 Reel /Inner box( 5000 Pcs)



8 Inner box/Carton box(40K Pcs)

:

•

•

•

•

•

•

•

•