

WWCI Series

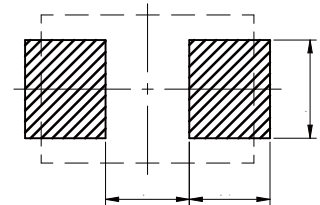
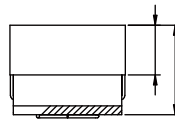
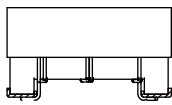
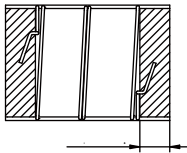


CHARACTERISTICS

-
-
-
-

APPLICATION

-



Part No	Inductance (nH)	Test Condition @MHz	Tolerance	Q Min.	Temperature Rise Current Max. (mA)	DCR Max. ()	SRF Min. (MHz)
			%				
			%				
			%				
			%				
			%				
			%				
			%				
			%				
			%				
			%				
			%				
			%				
			%				
			%				
			%				
			%				

Part No	Inductance (nH)	Test Condition @MHz	Tolerance	Q Min.	Temperature Rise Current Max. (mA)	DCR Max. ()	SRF Min. (MHz)
			%				
			%				
			%				
			%				
			%				
			%				
			%				
			%				
			%				
			%				
			%				
			%				
			%				
			%				
			%				
			%				
			%				
			%				
			%				
			%				
			%				
			%				
			%				
			%				
			%				
			%				
			%				
			%				
			%				
			%				
			%				
			%				
			%				
			%				
			%				
			%				
			%				
			%				
			%				
			%				
			%				
			%				
			%				
			%				
			%				
			%				
			%				

C

