

BCMA Series

Common Mode Filters For Automotive Signal Line Size 4532

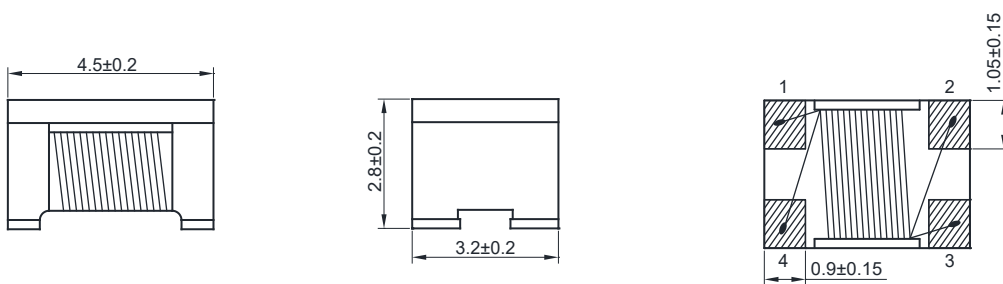
FEATURES

- Impedance variation: Extensive lineup are available for compatibility with various usages
- Common mode filter for Signal Line
- Operating temperature range: -40 to +125°C
- AEC-Q200 qualified
- Quantity: 500pcs

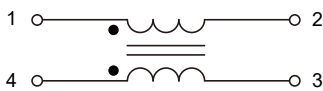
APPLICATION

- Radiated noise suppression for car multimedia accessories (MO)

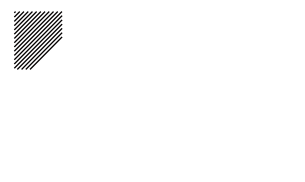
Dimensions: [mm]



Schematic:



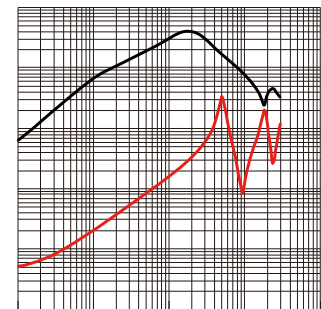
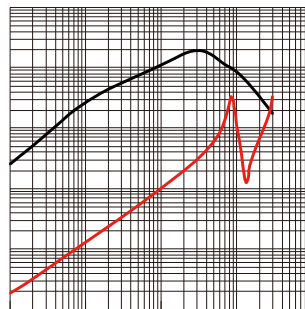
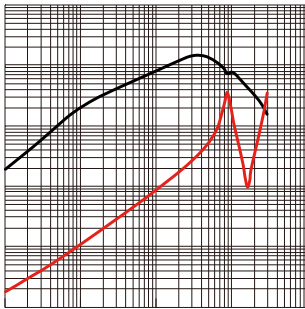
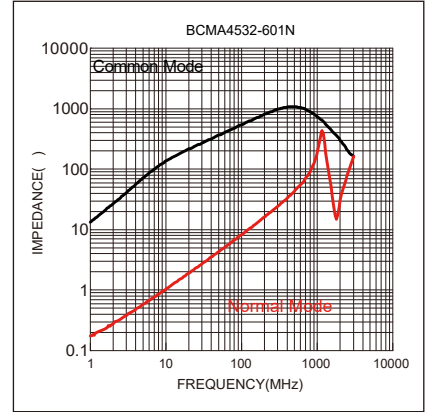
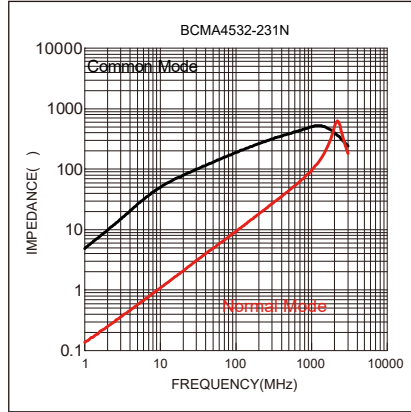
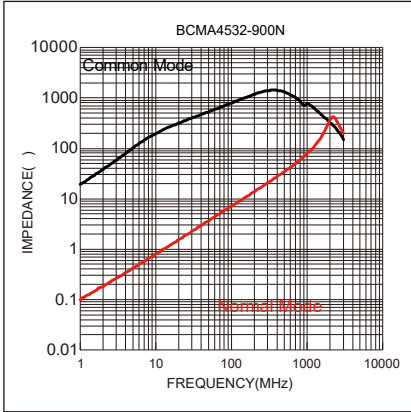
Land Pattern: [mm]



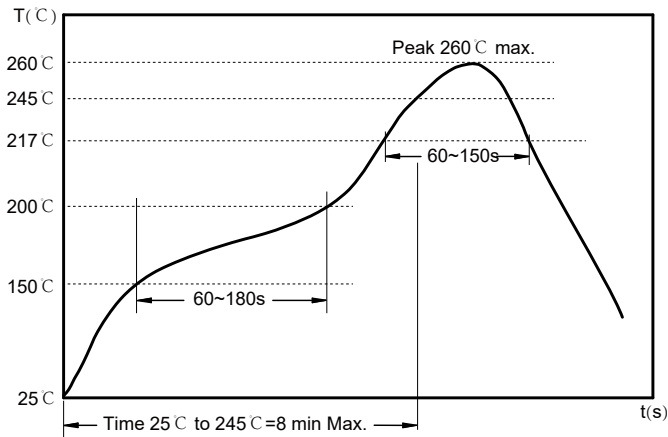
Electrical Properties:

BCMA 4532-900N				0.050	50	10M
BCMA 4532-231N			3500	0.050	50	10M
BCMA 4532-601N	450		2500		50	10M
BCMA 4532-901N	650				50	10M
BCMA 4532-142N					50	10M
BCMA 4532-282N				0.350	50	10M

Typical Electrical Characteristics:



Soldering Reflow:



Preheat condition: 150 ~200 °C / 60~180 sec.

Allowed time above 217 °C: 60~150 sec.

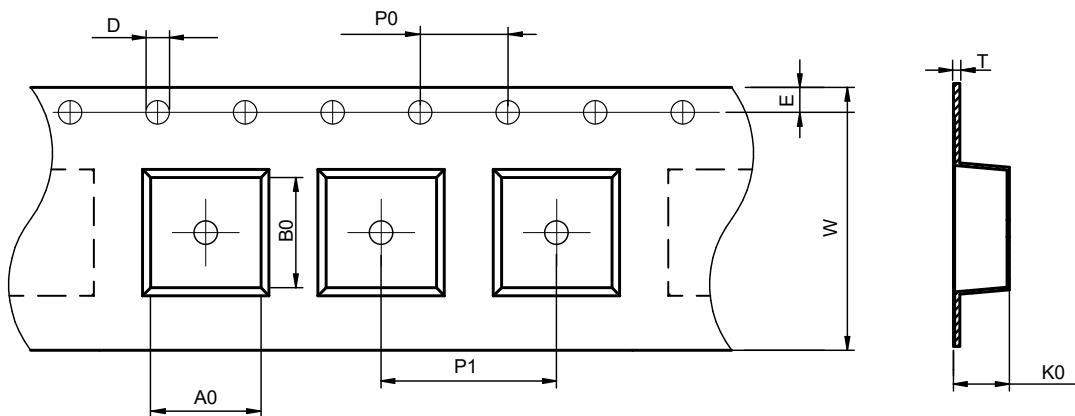
Max temperature: 260 °C .

Max time at max temperature: 10 sec.

Allowed Reflow time: 3x max.

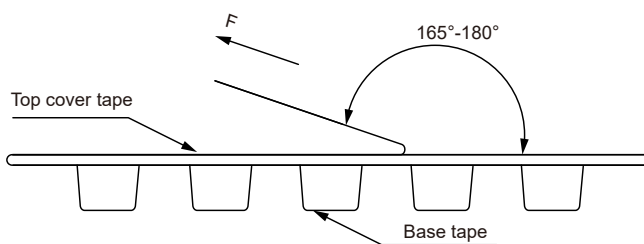
Packaging Information:

Tape Dimension :



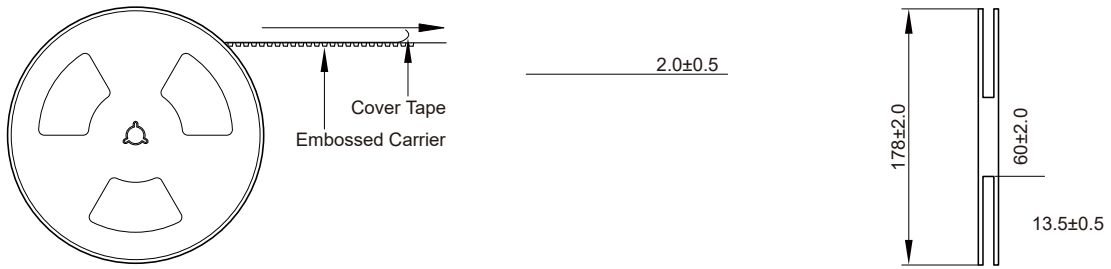
Series	A0 (mm)	B0 (mm)	D (mm)	P0 (mm)	P1 (mm)	W (mm)	K0 (mm)	E (mm)	T (mm)
BCMA4532	3.6±0.1	4.9±0.1	1.5±0.1	4.0±0.1	8.0±0.1	12.0±0.3	3.0±0.1	1.75±0.1	0.26±0.05

Peel force of top cover tape:



The peel force of top cover tape shall be between 0.15 to 0.78 N

Reel Dimension: [mm]



Cautions and Warnings:

Storage Conditions:

Operation Instructions: